

OPERATING INSTRUCTIONS

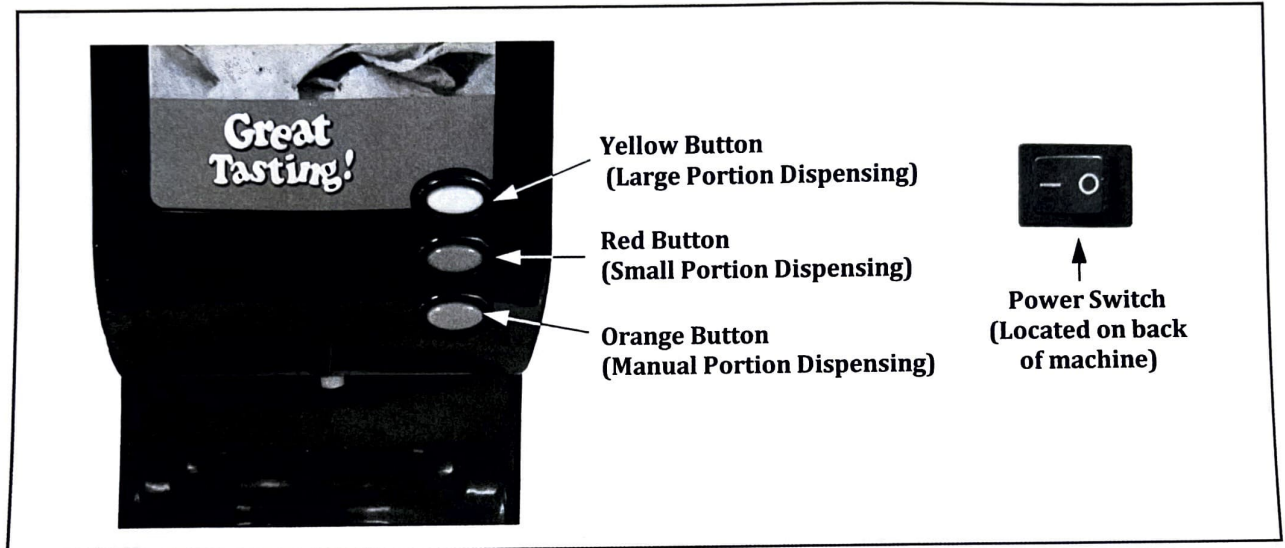
Controls and Their Functions

YELLOW BUTTON - Factory set to dispense product for 8 seconds.

RED BUTTON - Factory set to dispense product for 4 seconds.

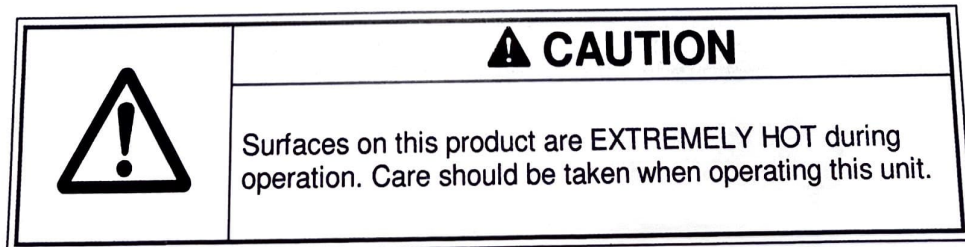
ORANGE BUTTON - Factory set to dispense product manually.

POWER BUTTON - Turns the warmer On/Off



Operating Instructions

1. Plug the power cord into a grounded outlet and turn the warmer on.
2. Pre-heat the unit with your product inside for approximately one hour. See next page for product installation.
3. Dispensing temperature for cheese is between 140°F and 155°F.



TURN OFF THE POWER AND UNPLUG THE MACHINE AT THE END OF EACH DAY. DO NOT LEAVE THE UNIT OPERATING UNATTENDED!

PRODUCT INSTALLATION

Installing and Removing Food Product

Product Installation

Step 1:

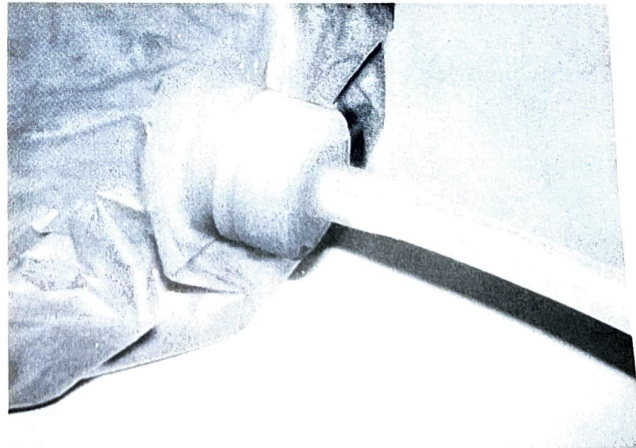
Remove the cap from the bagged product.



Step 2:

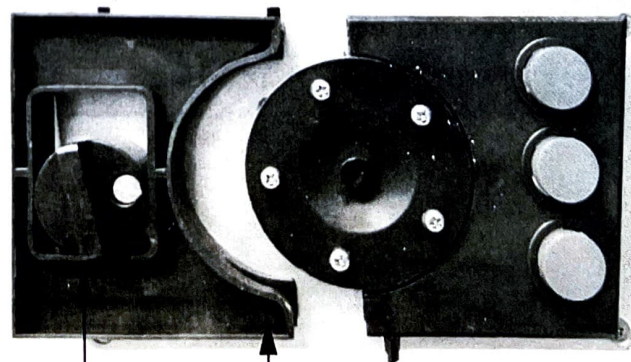
Install a new tube. Make sure that the tube is securely seated into the new bag.

Tube is included with Gold Medal Cheese Bags. To order tube separately use Item No. 5285.



Step 3:

Open the front door of the warmer. Open the tube clamp by turning the cam counterclockwise.



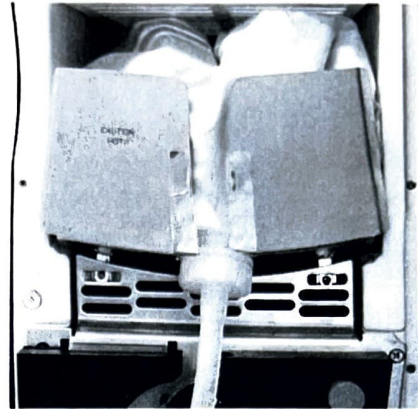
Cam

Tube Clamp

Installing and Removing Food Product (continued)

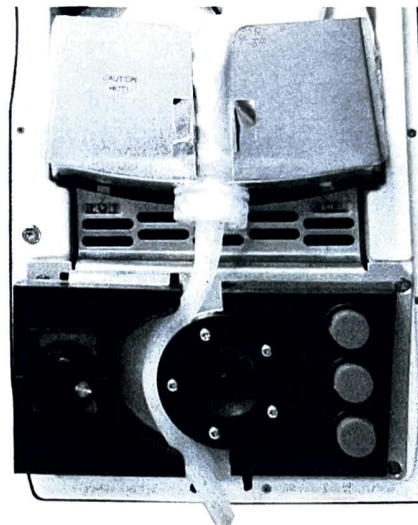
Step 4:

Place the product on the rack with the spout and tube directed toward the front, and downward through the opening.



Step 5:

Guide the tube through the pump slot from top to bottom.

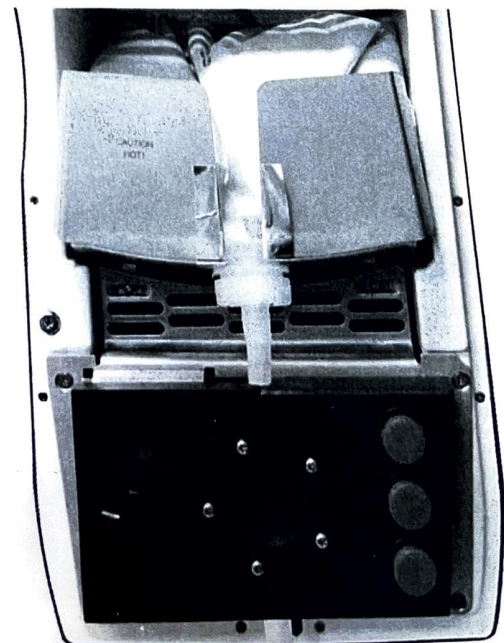


Step 6:

Close the tube clamp by turning the cam clockwise, and close the warmer front door.

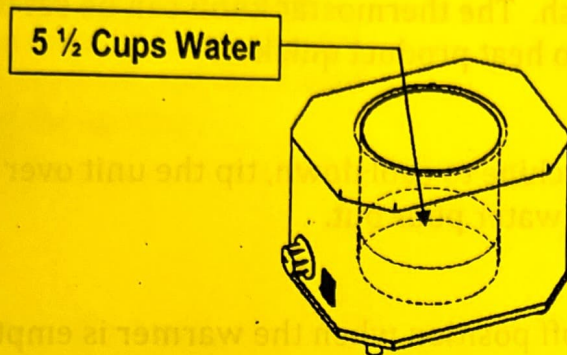
Product Removal:

1. Open the front door of the warmer.
2. Open Tube Clamp (see Step 3 above).
3. Remove tubing, by pulling from the bottom up.
4. Remove empty product bag and tube from the cheese dispenser.



OPERATING INSTRUCTIONS

1. Always clean unit thoroughly before each use.
2. Fill water vessel with 5 ½ cups of water.



3. For unit 2028A, install the jar, lid, and ladle into the water vessel as seen in Figure A. For units 2028B, 2028C and 2028D install standoff, jar or No. 10 can, and pump as seen in Figure B.

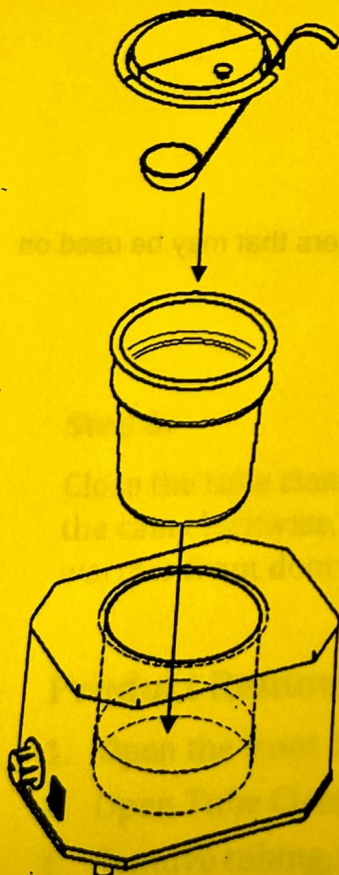


Figure A: Unit 2028A Assembly

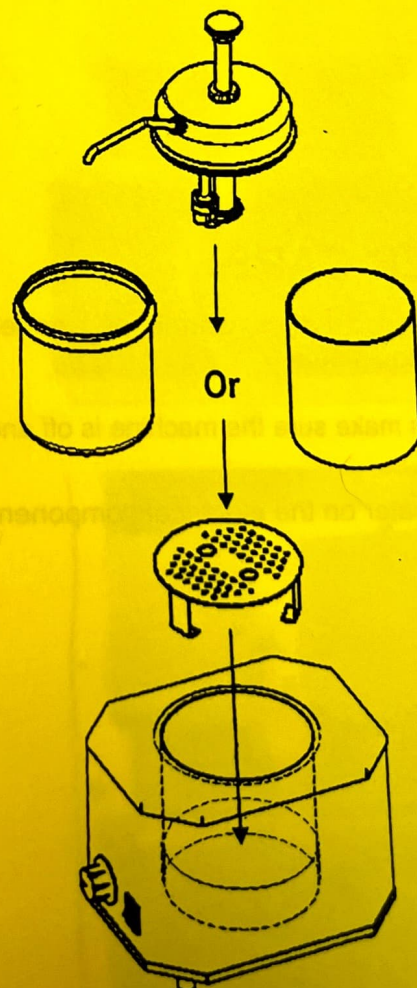


Figure B: Units 2028B, 2028C and 2028D Assembly

4. Unit is now ready to be used. Plug cord in, turn on warmer & adjust thermostat to the products recommended serving temperature.

This will turn on the heating element in the base of the unit and will keep your product hot and fresh. The thermostat knob can be set to maximum, for a limited time, to heat product quicker.

5. When finished, wait for the machine to cool down, tip the unit over a bucket/sink and let remaining water pour out.
6. Keep the power switch in the off position when the warmer is empty or not being used.

WARNING: Always turn the **POWER** switch to **OFF** when the machine is not in use.

WARMER CARE

It is recommended that the warmer be cleaned out daily using suitable cleaners that may be used on food service equipment.

- Always make sure the machine is off and unplugged before cleaning.

NEVER use water on the electrical components in the base.